

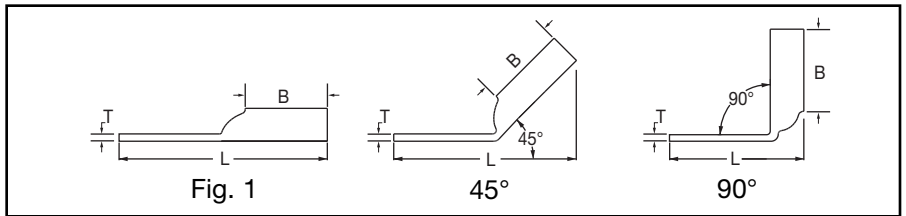
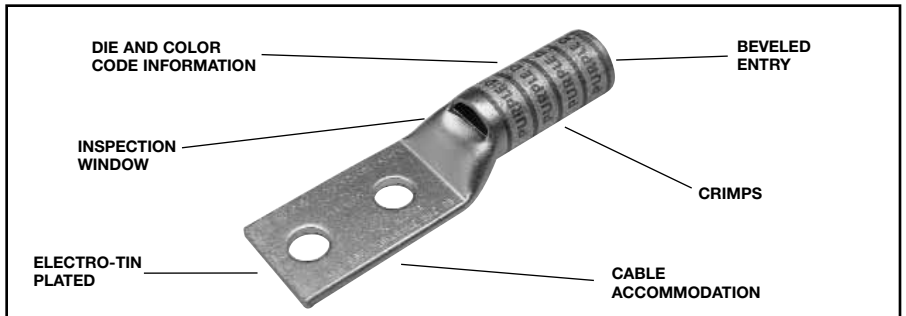
**TWO HOLE HYLUG™
FLEX CONDUCTOR
LONG BARREL WITH
INSPECTION WINDOW**

TYPE YAZ-FX

**COPPER COMPRESSION
TERMINAL**

UL Listed 90° C,
600 Volts to 35 kV ◆

45° and 90° angles are available.
Please contact Customer Service to order:
1-800-346-4175



Catalog Number	Fig #	Conductor		Stud Hole Size	Stud Hole Spacing	Tongue Width	Figure Dimensions			Dieless (# of crimps)	▲ Installation Tooling					Wire Strip Length	
		AWG	MM²				(B)	(T)	(L)		Mechanical		Hydraulic		Color Code		Die Index
											MD6, OUR840, MD7-34R	BCT500HS, Y500CTHS	Y35, Y39, Y750, Y46*, PAT750				
YAZ8C2TC10FX	1	37/24 #8 Weld #3 AWG	10	# 10	5/8"	.41"	.75"	.08"	2.20"	Y8MRB-1 (1)	W8CVT (2) W8CRT (2) X8CRT (2)	W8CVT (2) W8CRT (2) X8CRT (2)	U8CRT (2)	Red	49	1"	
YAZ8C2TC10E2FX	1			# 10	3/4"	.41"	.75"	.08"	2.33"	MY29-11 (2)							
YAZ8C2TC14E1FX	1			1/4"	1"	.44"	.75"	.08"	2.70"	Y1MRTC (2)							
YAZ8C2TC14FX	1			1/4"	5/8"	.44"	.75"	.08"	2.32"	Y81KFT (1)							
YAZ8C2TC14E2FX	1			1/4"	3/4"	.44"	.75"	.08"	2.45"	Y81KFTMBH (1)							
YAZ8C2TC38FX	1			3/8"	1"	.58"	.75"	.06"	2.89"	PAT81KFT-18V (1)							
YAZV6C2TC10E2FX	1	61/24 #6 Weld #6 AWG	16	# 10	3/4"	.48"	.75"	.08"	2.64"	MY29-11 (2) Y644HS (1) Y1MRTC (2) Y81KFT (1) Y81KFTMBH (1) PAT81KFT-18V (1)	W5CVT (2) W5CRT (2) X5CRT (2)	W5CVT (2) W5CRT (2) X5CRT (2)	U5CRT (2)	Blue	7	1-3/16"	
YAZV6C2TC14FX	1			1/4"	5/8"	.48"	.75"	.08"	2.65"								
YAZV6C2TC14E1FX	1			1/4"	1"	.48"	.75"	.08"	3.03"								
YAZV6C2TC38FX	1			3/8"	1"	.58"	.75"	.06"	3.22"								
YAZV6C2TC38E2FX	1			3/8"	3/4"	.58"	.75"	.06"	2.97"								
YAZV6C2TC38E6FX	1			3/8"	7/8"	.58"	.75"	.06"	3.09"								
YAZV4C2TC38E2-FX	1			3/8"	3/4"	.58"	1.25"	.08"	3.14"	Y1MRTC (4)	W4CVT (2) W4CRT (2) X4CRT (2)	W4CVT (2) W4CRT (2) X4CRT (2)	U4CRT (2)	Gray	8	1-5/16"	
YAZV4C2TC38FX	1	91/24-105/24 #4 Weld #4 AWG	—	3/8"	1"	.58"	1.25"	.08"	3.39"	MY29-11 (2) Y644HS (1) Y81KFT (1) Y81KFTMBH (1) PAT81KFT-18V (1)							
YAZV4C2TC14FX	1			1/4"	5/8"	.55"	1.25"	.09"	2.83"								
YAZV4C2TC14E2FX	1			1/4"	3/4"	.55"	1.25"	.09"	2.95"								
YAZV2C2TC14FX	1	125/24-150/24 #2 Weld #2 AWG	35	1/4"	5/8"	.68"	1.38"	.10"	3.01"	Y1MRTC (4) MY29-11 (4) Y644HS (1) Y81KFT (1) Y81KFTMBH (1) PAT81KFT-18V (1)	W2CVT (2) W2CRT (2) X2CRT (2)	W2CVT (2) W2CRT (2) X2CRT (2)	U2CRT (2)	Brown	10	1-7/16"	
YAZV2C2TC14E2FX	1			1/4"	3/4"	.68"	1.38"	.10"	3.13"								
YAZV2C2TC38FX	1			3/8"	1"	.68"	1.38"	.10"	3.57"								
YAZV2C2TNTCFX	1			1/2"	1-3/4"	.83"	1.38"	.10"	4.76"								
YAZV1C2TC14FX	1	175/24-225/24 #1 Weld #1 AWG	—	1/4"	5/8"	.75"	1.38"	.12"	3.04"	MY29-11 (2) Y644HS (1) Y81KFT (2) Y81KFTMBH (2) PAT81KFT-18V (2)	W1CVT (2) W1CRT-1 (2) X1CRT-1 (2)	W1CVT (2) W1CRT-1 (2) X1CRT-1 (2)	U1CRT-1 (2)	Green	11	1-7/16"	
YAZV1C2TC14E1FX	1			1/4"	1"	.75"	1.38"	.12"	3.41"								
YAZV1C2TC14E2FX	1			1/4"	3/4"	.75"	1.38"	.12"	3.16"								
YAZV1C2TC38FX	1			3/8"	1"	.75"	1.38"	.12"	3.60"								
YAZV1C2TC516E6FX	1			5/16"	7/8"	.75"	1.38"	.12"	3.35"								
YAZV1C2TC516FX	1			5/16"	1"	.75"	1.38"	.12"	3.47"								

* Use PUADP-1 adaptor with U -dies in Y46 HYPRESS™.
 ** The MM² conductor size referenced here is for both Class 2 and Class 5 conductor.
 *** The MM² conductor size listed are the recommendations for Class 5 conductor.

▲ See tooling section of this catalog for complete tool and die listings. Use ONLY color-coded die recommendations for -FX connectors. For nest/indenter system contact factory.

◆ For applications greater than 2000 Volts consult cable manufacturer for voltage stress relief instructions.
Note: All dimensions shown are for reference only.

Blue highlighted items are industry standard and most frequently ordered.

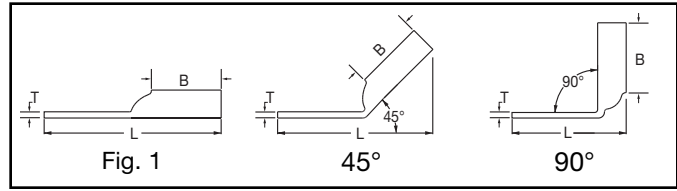
Compression Connections

BURNDY®

Copper Compression – Flex – Long Barrel – Inspection Window

C-62

TWO HOLE HYLUG™ FLEX CONDUCTOR LONG BARREL WITH INSPECTION WINDOW (Continued)



UL Listed 90° C,
600 Volts to 35 kV ◆

45° and 90° angles are available.
Please contact Customer Service to order:
1-800-346-4175



Catalog Number	Fig #	Conductor		Stud Hole Size	Stud Hole Spacing	Tongue Width	Figure Dimensions			Dieless (# of crimps)	▲ Installation Tooling				Wire Strip Length		
		AWG	MM²				(B)	(T)	(L)		Mechanical		Hydraulic			Color Code	Die Index
											MD6, OUR840, MD7-34R	BCT500HS, Y500CTHS	Y35, Y39, Y750, Y46*, PAT750				
YAZV252TC14FX	1	275/24 1/0 Weld 1/0 AWG	50	1/4"	5/8"	.83"	1.50"	.12"	3.20"	MY29-11 (2) Y644HS (1) Y81KFT (2) Y81KFTMBH (2) PAT81KFT-18V (2)	W25VT (4)	W25RT (4)	U25RT (2)	Pink	12	1-9/16"	
YAZV252TC14E2FX	1			1/4"	3/4"	.83"	1.50"	.12"	3.32"		W25RT (4)	W25RT (4)					
YAZV252TC38FX	1			3/8"	1"	.83"	1.50"	.12"	3.76"		X25RT (4)	X25RT (4)					
YAZV252NTCFX	1	325/24 2/0 Weld 2/0 AWG	70	1/2"	1-3/4"	.83"	1.50"	.12"	4.95"	MY29-11 (2) Y644HS (1) Y81KFT (2) Y81KFTMBH (2) PAT81KFT-18V (2)	W26VT (4)	W26RT (4)	U26RT (2)	Black	13	1-9/16"	
YAZV262TC14FX	1			1/4"	5/8"	.93"	1.50"	.13"	3.20"		W26RT (4)	W26RT (4)					
YAZV262TC14E2FX	1			1/4"	3/4"	.93"	1.50"	.13"	3.32"		W26RT (4)	W26RT (4)					
YAZV262TC38FX	1	325/24 2/0 Weld 2/0 AWG	70	3/8"	1"	.93"	1.50"	.13"	3.76"	MY29-11 (2) Y644HS (1) Y81KFT (2) Y81KFTMBH (2) PAT81KFT-18V (2)	W26RT (4)	W26RT (4)	U26RT (2)	Black	13	1-9/16"	
YAZV262NTCFX	1			1/2"	1-3/4"	.93"	1.50"	.13"	4.95"		W27VT (4)	W27RT (4)	U27RT (2)	Orange	14		
YAZV272TC14E2FX	1			1/4"	3/4"	1.03"	1.50"	.14"	3.36"		W27RT (4)	W27RT (4)					
YAZV272TC38FX	1	450/24 3/0 Weld 3/0 AWG	95	3/8"	1"	1.03"	1.50"	.14"	3.80"	MY29-11 (2) Y644HS (1) Y81KFT (2) Y81KFTMBH (2) PAT81KFT-18V (2)	W27RT (4)	W27RT (4)	U27RT (2)	Orange	14	1-9/16"	
YAZV282TC14E2FX	1	1/4"	3/4"	1.14"	1.62"	.15"	3.52"	W28VT (4)	W28RT (4)		U28RT (2)	Purple	15				
YAZV282NT38FX	1	3/8"	1"	.94"	1.62"	.15"	3.96"	W28RT (4)	W28RT (4)								
YAZV282TC38FX	1	4/0 Weld 4/0 AWG	120	3/8"	1"	1.14"	1.62"	.15"	3.96"	MY29-11 (2) Y644HS (1) Y81KFT (2) Y81KFTMBH (2) PAT81KFT-18V (2)	W28RT (4)	W28RT (4)	U28RT (2)	Purple	15	1-11/16"	
YAZV282NTCFX	1	1/2"	1-3/4"	1.14"	1.62"	.15"	4.93"	X28RT (6)	X28RT (6)								
YAZV292NT516FX	1	550/24 4/0 Weld	—	5/16"	1-3/4"	1.20"	2.00"	.16"	4.62"		W29VT (4)	W29RT (4)	U29RT (2)	Yellow	16		2-1/16"
YAZ302TC38FX	1	250 Flex CLASS G 259 Str. CLASS H 427 Str.	—	3/8"	1"	1.20"	2.00"	.16"	4.42"	W29RT (4)	W29RT (4)	U29RT (2)	Yellow	16			
YAZ312TC38FX	1	250 Flex 637/24	150	3/8"	1"	1.28"	2.00"	.18"	4.45"	W30VT (4)	W30RT (4)	U30RT (4)	White	17			
YAZ312TC14E2FX	1	CLASS I, K, M	—	1/4"	3/4"	1.29"	2.00"	.18"	4.02"	Y644HS (1) Y81KFT (2) Y81KFTMBH (2) PAT81KFT-18V (2)	W30RT (4)	W30RT (4)	U30RT (4)	White	17	2-1/16"	
YAZ322TC38FX	1	775/24 313.1 kcmil	185	3/8"	1"	1.55"	2.12"	.19"	4.62"		W31VT (4)	W31RT (4)	U31RT (4)	Red	18		
YAZ342TC14E2FX	1	373.3 kcmil	240	1/4"	3/4"	1.55"	2.25"	.23"	4.42"		W31RT (4)	W31RT (4)	U31RT (4)	Red	18		
YAZ342NT38FX	1	925/24	240 (350 kcmil nom.)	3/8"	1"	.96"	2.25"	.23"	4.85"	Y644HS (1) Y81KFT (2) Y81KFTMBH (2) PAT81KFT-18V (2)	W32VT (4)	W32RT (4)	U32RT (4)	Blue	19	2-5/16"	
YAZ342TC38FX	1	3/8"		1"	1.55"	2.25"	.23"	4.85"	W32RT (4)		W32RT (4)						
YAZ342NTCFX	1	1/2"		1-3/4"	1.55"	2.25"	.23"	6.04"									
YAZ362TC38FX	1	1100/24 444.4 kcmil	—	3/8"	1"	1.72"	2.69"	.27"	5.55"	Y644HS (1) Y644MBH (1)	—	—	U34RT (4)	Brown	20	2-3/4"	
YAZ382NT38FX	1	535.3 kcmil	300	3/8"	1"	1.63"	2.81"	.27"	5.72"		U39RT (4)		U39RT (4)	Black	24		
YAZ382TC38FX	1	3/8"	1"	1.81"	2.81"	.27"	5.72"										
YAZ382NNTFX	1	1325/24	300 (500 kcmil nom.)	1/2"	1-3/4"	1.63"	2.81"	.27"	6.72"	Y644HS (1) Y644MBH (1)	—	—	U38XRT (4)	Pink	L99	2-7/8"	
YAZ382NTCFX	1	1/2"		1-3/4"	1.84"	2.81"	.27"	6.72"									
YAZ402NTCFX	1	646 kcmil 1600/24 650 kcmil Flex	—	1/2"	1-3/4"	1.93"	2.94"	.30"	6.89"	Y644HS (1) Y644MBH (1)	U39RT (4)		U39RT (4)	Black	24	3"	
YAZ442NT38FX	1	750 Flex 1925/24 Str. 777.7 kcmil	—	3/8"	1"	1.63"	3.00"	.33"	6.08"				U44XRT (4)	Yellow	L115	3-1/16"	

* Use PUADP-1 adaptor with U -dies in Y46 HYPRESS™.
** The MM² conductor size referenced here is for both Class 2 and Class 5 conductor.
*** The MM² conductor sizes listed are the recommendations for Class 5 conductor.

▲ See tooling section of this catalog for complete tool and die listings. Use ONLY color-coded die recommendations for -FX connectors. For nest/indenter system contact factory.

◆ For applications greater than 2000 Volts consult cable manufacturer for voltage stress relief instructions.
Note: All dimensions shown are for reference only.

Blue highlighted items are industry standard and most frequently ordered.